



Coultons
FOR SALE
020 3869 8989
www.coultons.co.uk

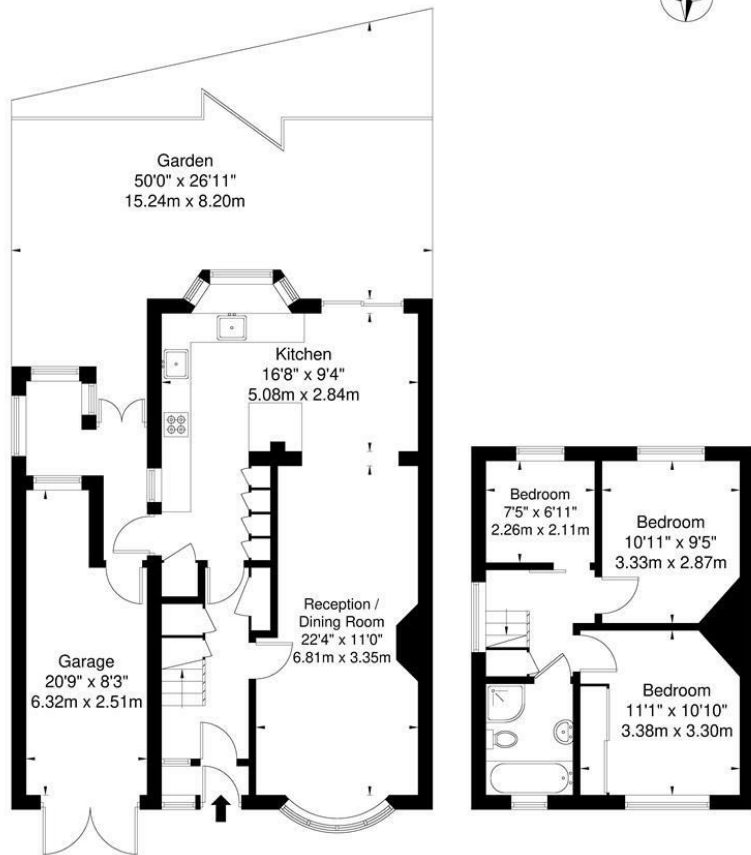
Amesbury Drive, North Chingford, E4 7PZ

£650,000

Coultons

Amesbury Drive North, Chingford, London, E4 7PZ

Approximate Gross Internal Area = 113 sq m / 1216 sq ft



Ground Floor

First Floor

For Illustration Purposes Only - Not To Scale

This floor plan should be used as a general outline for guidance only and does not constitute in whole or in part an offer or contract. Any intending purchaser or lessee should satisfy themselves by inspection, enquiries and full survey as to the correctness of each statement. Any areas, measurements or distances quoted are approximate and should not be used to value a property or be the basis of any sale or let.



Energy Efficiency Rating		Current	Potential
Very energy efficient - lower running costs			
(92 plus) A			
(81-91) B			
(69-80) C			77
(55-68) D		55	
(39-54) E			
(21-38) F			
(1-20) G			
Not energy efficient - higher running costs			
England & Wales		EU Directive 2002/91/EC	

Agents Note: Whilst every care has been taken to prepare these particulars, they are for guidance purposes only. All measurements are approximate and are for general guidance purposes only and whilst every care has been taken to ensure their accuracy, they should not be relied upon and potential buyers/tenants are advised to recheck the measurements



OFFICE DETAILS

26 Station Road
North Chingford
London
E4 7BE

020 8090 0860
sales@coultons.co.uk
www.coultons.co.uk

OFFICE DETAILS

425a Lordship Lane
Wood Green
London
N22 5DH

020 3869 8989
sales@coultons.co.uk
www.coultons.co.uk